

USER MANUAL

MODEL : DUPLEX
USB800A
USB200A

DUPLEX MODEL INSTALLATION



Thank you for choosing Cyron products! This wall plate Quick Charger is a simple and secure way to add USB charging capability to a 15 Amp standard outlet. It also incorporates a stylish LED night light that can also serve as a pathway light in corridors and hallways. Simply replace the cover plate of an existing matching cover plate (Duplex and Decor models available) by following a few easy steps.



Register your warranty

www.cyron.com/register

- ▶ Participate in product giveaways
- ▶ Receive technical support
- ▶ Product releases & upgrades



Tools needed: Flat head screwdriver

CAUTION!

Please follow all directions carefully to safely install this product. **POWER MUST BE TURNED OFF FROM THE FUSE PANEL OR MAIN CIRCUIT BREAKER BEFORE STARTING INSTALLATION.** Before you begin test the outlet to make sure power has been turned off.

1 TURN OFF POWER

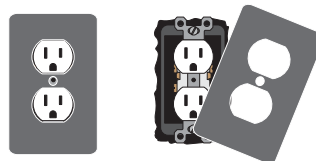


RISK OF SERIOUS INJURY OR DEATH.

Turn off power to the outlet from the fuse panel or main circuit breaker. Before you begin test the outlet to make sure power to the outlet is turned off. Test with a meter or a plug-in lamp.

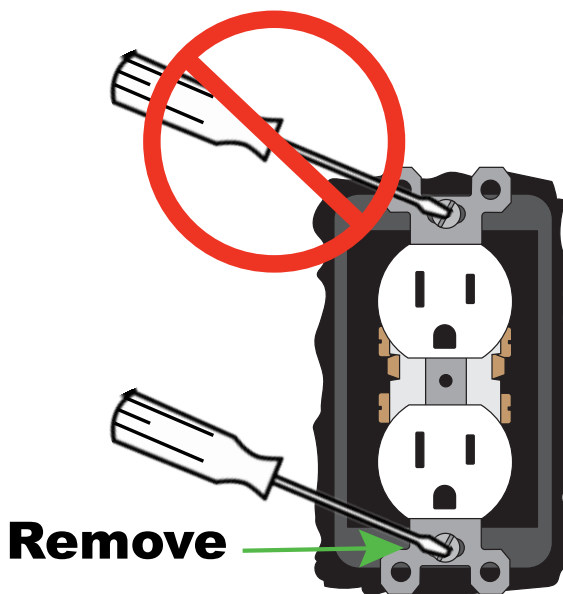
2 REMOVE EXISTING WALL PLATE

Using a flathead screwdriver remove the existing wall plate. Removing the cover will expose the outlet in the electrical box.



3 REMOVE BOTTOM SCREW

Carefully remove bottom screw.

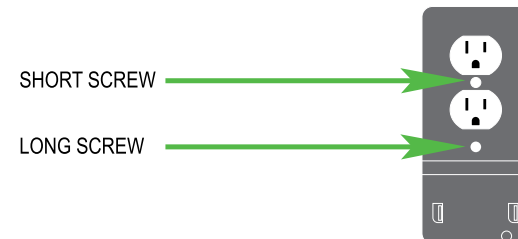


Remove

4 INSTALL THE OUTLITMATE

Place the charger plate over the outlet so the two sockets are lined up with the large opening(s) of the plate. Gently press the plate over the outlet ensuring the two metal tabs on the back of the plate are aligned with the metal contacts on the sides of the electrical outlet. Install the short colored screw provided in the center hole. Do not over tighten to avoid breaking the cover plate.

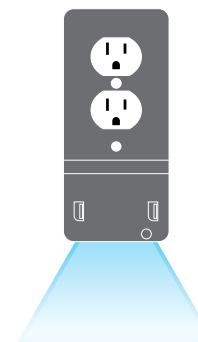
Install the long colored screw in the lower hole of the wall plate. Apply pressure on the plate as you start to install this screw, making sure the screw is lined up with both the outlet and the electrical box. Tighten the lower screw so the wall plate and the outlet are firmly in place. Turn on the fuse panel to restore electricity to the outlet.



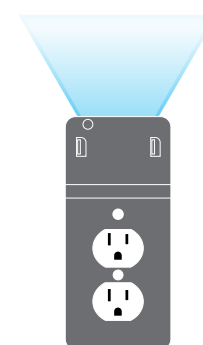
Is furniture blocking the LEDs? Need more light?

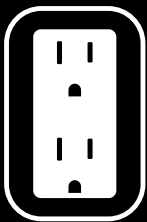
In most cases OUTLITMATE can be installed inverted to provide more light. To do that, simply install it upside down. If not functioning properly due to compatibility issues then you must invert the entire outlet sockets. Proper care must be taken in doing such a task. Consult an electrician if unsure.

Standard Installation



Inverted Installation





USER MANUAL

MODEL : DECOR
USB801A
USB201A

DECOR MODEL INSTALLATION

WARRANTY

CYRON warrants this product against any defects in materials or workmanship for a period of ONE (1) year from the date of purchase. The warranty covers normal usage as intended by the factory and does not cover misuse, abuse, accidents, or damages caused due to the acts of God. Proof of purchase is required.

ANY IMPLIED WARRANTIES, INCLUDING WITHOUT LIMITATION THE IMPLIED WARRANTIES OF MERCHANTABILITY AND FITNESS FOR A PARTICULAR PURPOSE, SHALL BE LIMITED TO THE DURATION OF THIS LIMITED WARRANTY, OTHERWISE THE REPAIR, REPLACEMENT, OR REFUND AS PROVIDED UNDER THIS EXPRESS LIMITED WARRANTY IS THE EXCLUSIVE REMEDY OF THE CONSUMER, AND IS PROVIDED IN LIEU OF ALL OTHER WARRANTIES, EXPRESS OR IMPLIED. IN NO EVENT SHALL CYRON, INC. BE LIABLE, WHETHER IN CONTRACT OR TORT (INCLUDING NEGLIGENCE) FOR DAMAGES IN EXCESS OF THE PURCHASE PRICE OF THE PRODUCT, ACCESSORY OR FOR ANY INDIRECT, INCIDENTAL, SPECIAL OR CONSEQUENTIAL DAMAGES OF ANY KIND, OR LOSS OF REVENUE OR PROFITS, LOSS OF BUSINESS, OR OTHER FINANCIAL LOSS ARISING OUT OF OR IN CONNECTION WITH THE ABILITY OR INABILITY TO USE THE PRODUCTS OR ACCESSORIES TO THE FULL EXTENT THESE DAMAGES MAY BE DISCLAIMED BY LAW.

OPERATION

USB ports are compatible with Android, iOS, and many other standard rechargeable USB devices. Use an OEM supported cord to assure the charger stops at 100% full charge. Inexpensive after market cords do not have such capability. Cyron Quick Charger ports are capable of 3.1 Amp total output. The smart design automatically detects the needed amperage of each device and assures the devices are not overcharged.

Night light automatically shuts off when there is enough ambient light. NOTE: Sensitivity may not be ideal for all environments. Make sure the sensor remains unobstructed. Power draw is less than 0.2W.

CARE

Cleaning can be done with a soft dry cloth. Stains can be wiped clean with a damp cloth making sure no liquid or moisture enters the sockets and USB ports.

SUPPORT

Please read the instructions carefully. Should you have further questions please contact your local dealer or reach Cyron support at techsupport@cyron.com



1 TURN OFF POWER

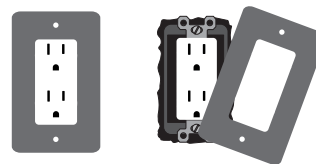


RISK OF SERIOUS INJURY OR DEATH.

Turn off power to the outlet from the fuse panel or main circuit breaker. Before you begin test the outlet to make sure power to the outlet is turned off. Test with a meter or a plug-in lamp.

2 REMOVE EXISTING WALL PLATE

Using a flathead screwdriver remove the existing wall plate. Removing the cover will expose the outlet in the electrical box.

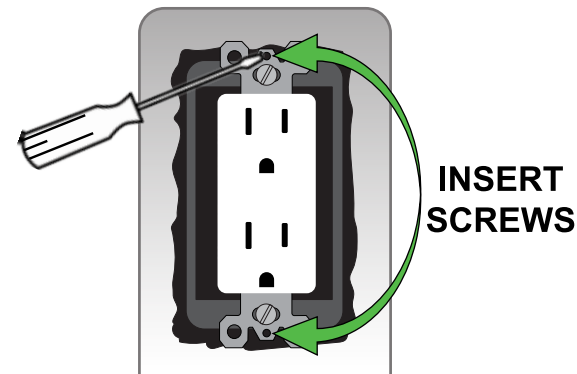


3 INSTALL THE OUTLITMATE

Place the charger plate over the outlet so the two sockets are lined up with the large opening(s) of the plate. Gently press the plate over the outlet ensuring the two metal tabs on the back of the plate are aligned with the metal contacts on the sides of the electrical outlet.

Install the short colored screw provided in the top hole.

Do not over tighten to avoid breaking the cover plate.



INSERT
SCREWS

SHORT SCREW

LONG SCREW



Install the long colored screw in the lower hole of the wall plate. Apply pressure on the plate as you start to install this screw, making sure the screw is lined up with both the outlet and the electrical box. Tighten the lower screw so the wall plate and the outlet are firmly in place. Turn on the fuse panel to restore electricity to the outlet.



Is furniture blocking the LEDs? Need more light?

In most cases OUTLITMATE can be installed inverted to provide more light. To do that, simply install it upside down. If not functioning properly due to compatibility issues then you must invert the entire outlet sockets. Proper care must be taken in doing such a task. Consult an electrician if unsure.

Standard Installation

Inverted Installation

